



### **Newcore Gold Drilling Intersects 2.02 g/t Gold Over 24.0 Metres and 1.43 g/t Gold Over 26.0 Metres, including 3.31 g/t Gold Over 9.0 Metres, at the Enchi Gold Project, Ghana**

*Drill Results from Step Out Drilling on the Sewum Gold Deposit;  
Additional Drill Results from the Kwakyekrom Target, Outside of the Resource Area*

January 27, 2021

TSX-V: NCAU, OTCQX: NCAUF

**Vancouver, BC - Newcore Gold Ltd. ("Newcore" or the "Company")** (TSX-V: NCAU, OTCQX: NCAUF) is pleased to announce additional drill results from the 58,000 metre drill program underway at the Company's 100% owned Enchi Gold Project ("Enchi" or the "Project") in Ghana. Drilling has intersected 2.02 grams per tonne gold ("g/t Au") over 24.0 metres ("m") from 36 m at the Sewum Gold Deposit ("Sewum"), with results continuing to intersect wide-spread gold mineralization outside of current resources. Newcore is also pleased to announce additional drill results from the Kwakyekrom Gold Target ("Kwakyekrom") located 8 km north-east of the Sewum deposit, with hole KKRC028 intersecting 1.43 g/t Au over 26.0 m from 111 m, including 3.31 g/t Au over 9.0 m from 115 m. Kwakyekrom is one of the most advanced exploration targets at Enchi with no currently defined gold resources.

#### **Highlights**

- **Drilling at Sewum has encountered mineralization outside of current resources**, connecting a 500-metre gap between existing resource pits. Results from drilling include:
  - Hole SWRC082 intersected 2.02 g/t Au over 24.0 m from 36 m to 60 m (oxide zone).
  - Hole SWRC083 intersected 1.97 g/t Au over 22.0 m from 86 m to 108 m (sulphide zone).
- **Drill results from Kwakyekrom continue to intersect strong results**, supporting the potential for additional resources at Enchi. Results include:
  - Hole KKRC028 intersected 1.43 g/t Au over 26.0 m from 111 m to 137 m, including 3.31 g/t Au over 9.0 m from 115 m to 124 m (sulphide zone).
  - Hole KKRC031 intersected 2.97 g/t Au over 10.0 m from 114 m to 124 m (sulphide zone).
- **Drilling on the Project continues** with three rigs currently on site, and two additional rigs anticipated to be on-site by the end of January.
- **Additional Exploration** underway at Enchi includes a trenching program at Sewum South and a Project-wide topographic survey planned for Q1 2021.

Luke Alexander, President & CEO of Newcore stated, "We are very pleased with the continued strong results being achieved across not only the defined deposits at Enchi but also the numerous high priority exploration targets. We believe there is strong potential to expand the resources at the existing deposit areas of Boin, Nyam and Sewum, and also potential to define additional resources at the advanced gold targets on the property that we are currently drilling. Kwakyekrom in particular has shown strong results and is a priority area for future resource growth at Enchi. With only approximately 30% of the drill results reported to date, we are looking forward to continuing to define the potential of this district scale project."

Greg Smith, Vice President of Exploration of Newcore stated, "We continue to grow our geological understanding of Enchi. Results from the drilling at Sewum are proving out the potential for resource growth at this deposit which currently is the largest contributor to our mineral resources on the Project. Additionally, we continue to advance the potential at our exploration targets which sit outside of the defined resource area. We are extremely encouraged with the results received to date at Kwakyeekrom which is one of the most advanced exploration targets on the property without an existing resource."

This news release highlights 15 holes targeting the Sewum Gold Deposit and 9 holes targeting the Kwakyeekrom Gold Target at Enchi. The 15 holes (2,894 m) drilled at Sewum continue to intersect wide-spread gold mineralization. Holes SWRC085 through SWRC092 tested the gap zone between the northern pit areas at Sewum, with results highlighting the continuation of mineralization. Holes SWRC078 through SWRC084 were step-out holes in the southern region of Sewum, focused on extending the limits of the current resource. The 9 holes (1,377 m) drilled at Kwakyeekrom extended the gold zone along strike, increasing the strike extent to 400 metres, remaining open in both directions. The drilling at Kwakyeekrom intersected wide gold mineralized zones as well as multiple sub-parallel structures. Additional drilling is planned at both Sewum and Kwakyeekrom in 2021.

Select assay results from the 24 holes of the drill program reported in this release are below:

**Table 1 - Enchi Gold Project Drill Highlights**

Hole ID	Zone/Deposit	From (m)	To (m)	Length (m)	Au (g/t)
<b>SWRC080</b>	Sewum	149.0	159.0	<b>10.0</b>	<b>1.35</b>
<b>SWRC082</b>	Sewum	36.0	60.0	<b>24.0</b>	<b>2.02</b>
<b>SWRC083</b>	Sewum	86.0	108.0	<b>22.0</b>	<b>1.97</b>
<b>SWRC084</b>	Sewum	115.0	134.0	<b>19.0</b>	<b>1.41</b>
<b>KKRC026</b>	Kwakyeekrom	20.0	24.0	<b>4.0</b>	<b>1.32</b>
and		80.0	94.0	<b>14.0</b>	<b>1.69</b>
<b>KKRC027</b>	Kwakyeekrom	84.0	101.0	<b>17.0</b>	<b>0.91</b>
<b>KKRC028</b>	Kwakyeekrom	111.0	137.0	<b>26.0</b>	<b>1.43</b>
including		115.0	124.0	<b>9.0</b>	<b>3.31</b>
<b>KKRC029</b>	Kwakyeekrom	21.0	45.0	<b>24.0</b>	<b>0.89</b>
<b>KKRC030</b>	Kwakyeekrom	109.0	127.0	<b>18.0</b>	<b>0.97</b>
<b>KKRC031</b>	Kwakyeekrom	114.0	124.0	<b>10.0</b>	<b>2.97</b>
and		162.0	168.0	<b>6.0</b>	<b>0.88</b>
<b>KKRC033</b>	Kwakyeekrom	69.0	75.0	<b>6.0</b>	<b>1.19</b>
<b>KKRC034</b>	Kwakyeekrom	14.0	46.0	<b>32.0</b>	<b>0.68</b>

Notes:

1. See detailed table for complete results
2. Intervals reported are core lengths with true width estimated to be 75 - 85%
3. Length-weighted averages from uncut assays

Plan maps showing the drill hole locations can be viewed at:

[https://newcoregold.com/site/assets/files/5673/2021\\_01\\_27-ncau-nr-enchi-plan-maps-l.pdf](https://newcoregold.com/site/assets/files/5673/2021_01_27-ncau-nr-enchi-plan-maps-l.pdf)

A cross section showing drill results and highlights for holes SWRC082, SWRC083, KKRC027, KKRC028 and KKRC029 can be viewed at:

[https://newcoregold.com/site/assets/files/5673/2021\\_01\\_27-ncau-nr-crosssections-l.pdf](https://newcoregold.com/site/assets/files/5673/2021_01_27-ncau-nr-crosssections-l.pdf)

A complete list of the 2020 - 2021 drill results to date, including hole details, can be viewed at:

[https://newcoregold.com/site/assets/files/5673/2021\\_01\\_27-ncau-enchi-2020-2021-drill-results-l.pdf](https://newcoregold.com/site/assets/files/5673/2021_01_27-ncau-enchi-2020-2021-drill-results-l.pdf)

A total of 21,536 metres in 132 holes have been completed as part of the ongoing 2020 - 2021 drill program at Enchi. For the total planned 58,000 metre drill program, assay results have now been received and released for 112 holes representing 17,993 metres (24 holes totalling 4,271 metres reported in this news release in addition to previously released results - 25 holes on [January 7, 2021](#), 19 holes on [December 15, 2020](#), 8 holes on [November 26, 2020](#), 10 holes on [November 10, 2020](#), 13 holes on [October 21, 2020](#) and 13 holes on [September 28, 2020](#)).

Enchi hosts a pit constrained National Instrument 43-101 ("NI 43-101") Inferred Mineral Resource of 52.9 million tonnes grading 0.72 g/t Au containing 1.22 million ounces gold (see Newcore news release dated [September 14, 2020](#)). The Company filed a NI 43-101 compliant technical report in support of the updated mineral resource estimate on October 28, 2020.

### **2020 - 2021 Enchi Drilling Program**

A 58,000 metre discovery and resource expansion drilling program is underway at Enchi. The program includes both RC and diamond drilling and will include the first deep drilling planned on the Project. This drill program includes testing extensions of the existing resource areas while also testing a number of high priority exploration targets outside of the Inferred Mineral Resource. Drilling is focused on step out extensions and exploration drilling at the Boin, Sewum, and Nyam Deposits. Additional drilling is planned at previously drilled zones that are outside of the resource area (Kojina Hill, Kwakyeokrom and Eradi), along with first pass drilling to test a series of kilometre-scale gold-in-soil anomalous zones with no prior drilling (Nkwanta, Sewum South and other anomalies). All zones represent high priority targets based on geological, geochemical and geophysical surface work and previous trenching and drilling.

### **Sewum Gold Zone**

The Sewum Gold Deposit is one of the primary deposits currently included in the NI 43-101 Inferred Mineral Resource Estimate at Enchi. Sewum is located 20 kilometres south of the town of Enchi, with nearby roads and power and further access provided by a series of drill roads. Sewum is outlined on surface by a six-kilometre-long and one- to two-kilometre-wide gold in soil anomaly. An airborne geophysical anomaly coincident with the Sewum Deposit defines a series of sub parallel structures.

### **Kwakyeokrom Gold Zone**

The Kwakyeokrom Gold Zone has seen limited past drilling and does not currently have a defined mineral resource. Kwakyeokrom is one of the most advanced exploration targets being tested by Newcore as part of the 2020 - 2021 drill program, with 2,564 metres of drilling in 18 RC holes completed to date as part of the ongoing 58,000 metre drill program. Kwakyeokrom is located 15 kilometres south of the town of Enchi, with nearby roads and power and further access provided by a series of drill roads. The Kwakyeokrom structure is interpreted to be an

extension of the Nyam structure and is located five kilometres south of Nyam. The zone is outlined on surface by a four-kilometre-long and one-to-two-kilometre-wide gold in soil anomaly. An airborne geophysical anomaly coincident with the Kwakyekrom Gold Zone is a sharp break in the conductivity trend.

## Drill Hole Locations

**Table 2 - Enchi Gold Project Drill Hole Location Details**

Hole ID	UTM East	UTM North	Elevation	Azimuth °	Dip °	Length (m)
SWRC078	520197	626036	83	120	-60	270
SWRC079	520334	626242	104	120	-60	294
SWRC080	520405	626279	113	120	-60	204
SWRC081	520380	626293	104	120	-60	250
SWRC082	520483	626291	115	120	-50	246
SWRC083	520459	626301	124	120	-60	252
SWRC084	520472	626357	114	120	-60	250
SWRC085	521395	628651	191	120	-50	100
SWRC086	521353	628672	198	120	-50	150
SWRC087	521415	628352	145	120	-50	120
SWRC088	521366	628375	145	120	-50	180
SWRC089	521412	628244	127	120	-50	102
SWRC090	521370	628269	137	120	-50	156
SWRC091	521371	628158	107	120	-50	100
SWRC092	521270	627986	106	120	-50	220
KKRC026	528614	634705	128	298	-60	162
KKRC027	528611	634689	128	298	-60	168
KKRC028	528632	634668	126	298	-60	213
KKRC029	528574	634699	133	298	-60	126
KKRC030	528653	634733	127	298	-60	180
KKRC031	528682	634774	131	298	-60	186
KKRC032	528570	634723	134	298	-60	114
KKRC033	528569	634584	109	298	-60	126
KKRC034	528517	634607	124	298	-60	102

## COVID-19 Protocols

Newcore's first priority is the health and safety of all employees, contractors, and local communities. The Company is following all Ghana guidelines and requirements related to COVID-19. The Company has implemented COVID-19 protocols for its ongoing drill program consisting of the mandatory use of personal protective equipment (including facemask for all

employees), maintaining social distancing, frequent hand washing, and daily temperature checks at the start of each shift.

### **Newcore Gold Best Practice**

Newcore is committed to best practice standards for all exploration, sampling and drilling activities. Drilling was completed by an independent drilling firm using industry standard RC and Diamond Drill equipment. Analytical quality assurance and quality control procedures include the systematic insertion of blanks, standards and duplicates into the sample strings. Samples are placed in sealed bags and shipped directly to Intertek Labs located in Tarkwa, Ghana for 50 gram gold fire assay.

### **Qualified Person**

Mr. Gregory Smith, P. Geo, Vice President of Exploration of Newcore, is a Qualified Person as defined by NI 43-101, and has reviewed and approved the technical data and information contained in this news release.

### **About Newcore Gold Corp.**

Newcore Gold is advancing its Enchi Gold project located in Ghana, Africa's largest gold producer<sup>1</sup>. The Project currently hosts an Inferred Mineral Resource of 1.2 million ounces of gold at 0.72 g/t<sup>2</sup>. Newcore Gold offers investors a unique combination of top-tier leadership, who are aligned with shareholders through their 32% equity ownership, and prime district scale exploration opportunities. Enchi's 216 km<sup>2</sup> land package covers 40 kilometres of Ghana's prolific Bibiani Shear Zone, a gold belt which hosts several 5 million-ounce gold deposits, including Kinross' Chirano mine 50 kilometers to the north. Newcore's vision is to build a responsive, creative and powerful gold enterprise that maximizes returns for shareholders.

### **On Behalf of the Board of Directors of Newcore Gold Ltd.**

Luke Alexander  
*President, CEO & Director*

### **For further information, please contact:**

Mal Karwowska | Vice President, Corporate Development and Investor Relations  
+1 604 484 4399  
info@newcoregold.com  
[www.newcoregold.com](http://www.newcoregold.com)

1 Source: Production volumes for 2019 as sourced from the World Gold Council

2 Notes for Inferred Mineral Resource Estimate:

1. CIM definition standards were followed for the resource estimate.
2. The 2020 resource models used ordinary kriging (OK) grade estimation within a three-dimensional block model with mineralized zones defined by wireframed solids and constrained by whittle pits shell.
3. A base cut-off grade of 0.3 g/t Au was used with a capping of gold grades at 18 g/t.
4. A US\$1,500/ounce gold price, open pit with heap leach operation was used to determine the cut-off grade of 0.3 g/t Au. Mining costs of US\$2.27/mined tonne and G&A and Milling costs of US\$9.84/milled tonne. The Inferred Mineral Resource Estimate is pit constrained.
5. A density of 2.45 g/cm<sup>3</sup> was applied. Numbers may not add due to rounding.

6. Mineral Resources that are not mineral reserves do not have economic viability.
7. These numbers are from the technical report titled "Enchi Gold Project, Resource Update, Enchi, Ghana", with an effective date of October 21, 2020, prepared by Todd McCracken, P. Geo. and Greg Smith, P. Geo. in accordance with National Instrument 43-101 *Standards of Disclosure for Mineral Projects* and is available under Newcore's SEDAR profile at [www.sedar.com](http://www.sedar.com).

*Neither the TSX Venture Exchange nor its Regulation Services Provider (as that term is defined in the policies of the TSX Venture Exchange) accepts responsibility for the adequacy or accuracy of this release.*

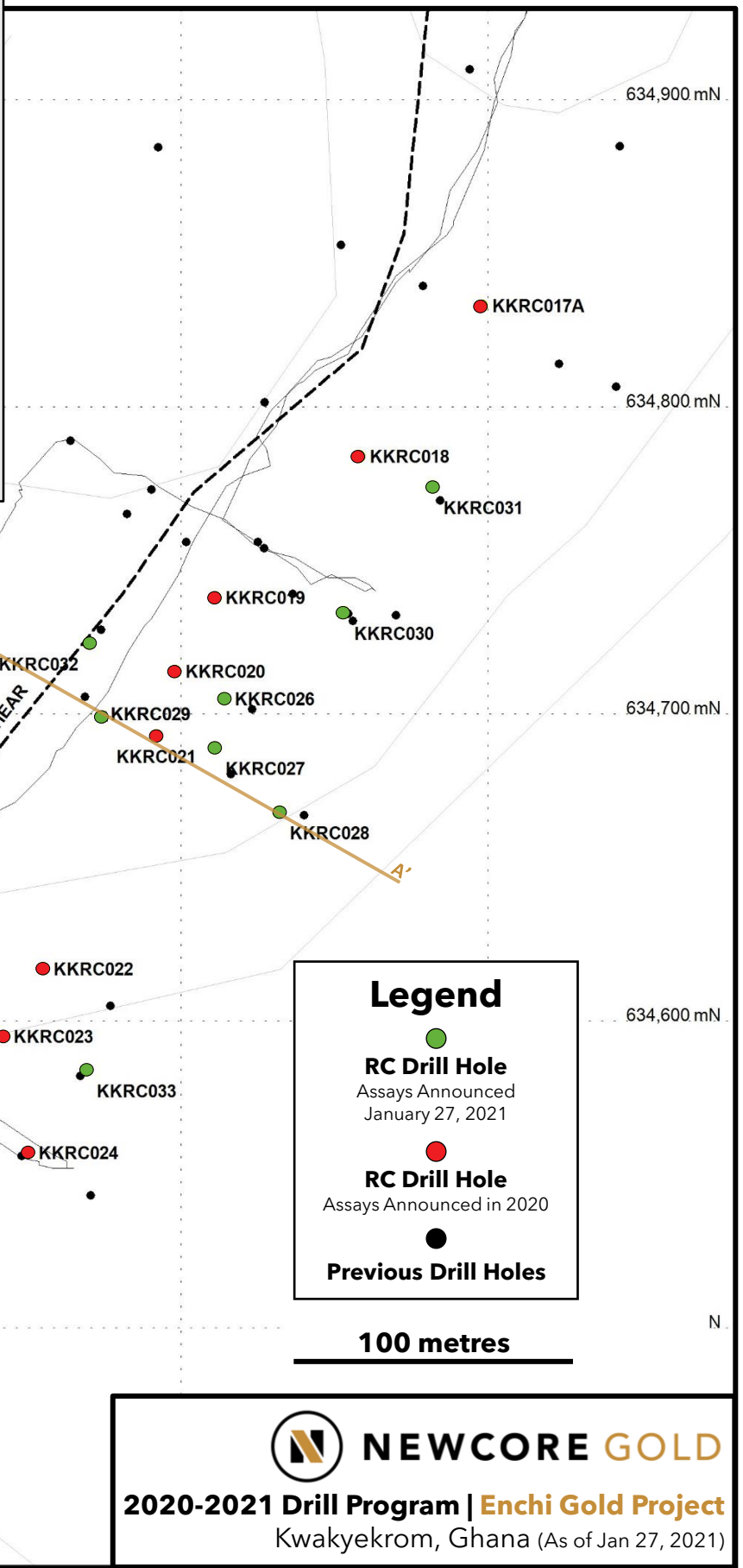
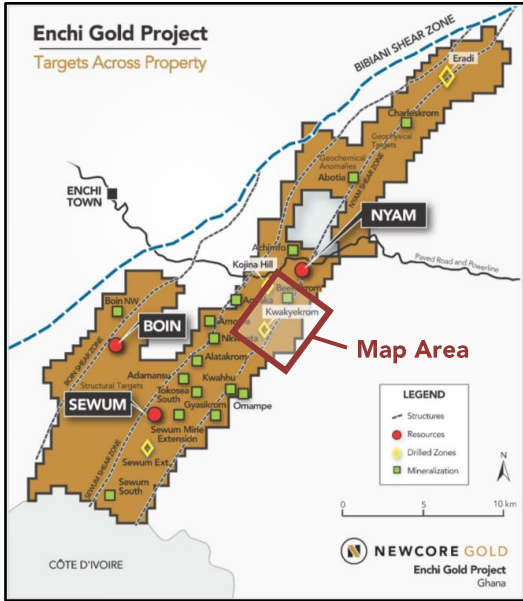
### ***Cautionary Note Regarding Forward-Looking Statements***

*This news release contains certain forward-looking statements. Any statements that express or involve discussions with respect to predictions, expectations, beliefs, plans, projections, objectives, assumptions or future events or performance (often, but not always, using words or phrases such as "expects" or "does not expect", "is expected", "anticipates" or "does not anticipate", "plans", "estimates" or "intends" or stating that certain actions, events or results "may", "could", "would", "might" or "will" be taken, "occur" or "be achieved") are not statements of historical fact and may be "forward-looking statements". Forward-looking statements are subject to a variety of risks and uncertainties which could cause actual events or results to materially differ from those reflected in the forward-looking statements.*

*Safe Harbor Statement under the United States Private Securities Litigation Reform Act of 1995: Except for the statements of historical fact contained herein, the information presented constitutes "forward-looking statements" within the meaning of the Private Securities Litigation Reform Act of 1995. Such forward-looking statements including but not limited to those with respect to the price of gold, potential mineralization, reserve and resource determination, exploration results, and future plans and objectives of the Company involve known and unknown risks, uncertainties and other factors which may cause the actual results, performance or achievement of the Company to be materially different from any future results, performance or achievements expressed or implied by such forward-looking statements. There can be no assurance that such statements will prove to be accurate as actual results and future events could differ materially from those anticipated in such statements. Accordingly, readers should not place undue reliance on forward-looking statements.*

**Enchi Gold Project**

Targets Across Property



**Legend**

- RC Drill Hole  
Assays Announced  
January 27, 2021
- RC Drill Hole  
Assays Announced in 2020
- Previous Drill Holes

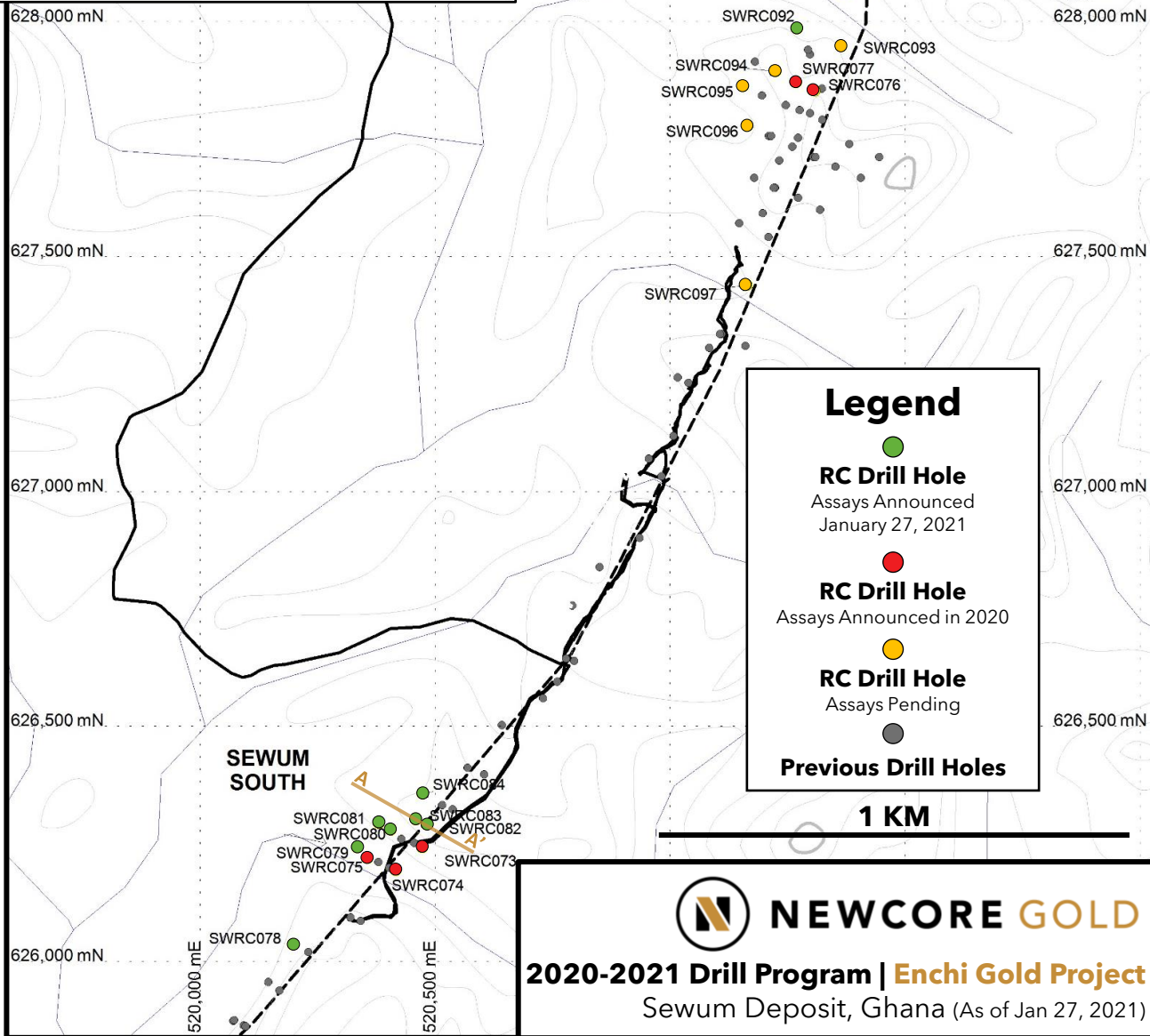
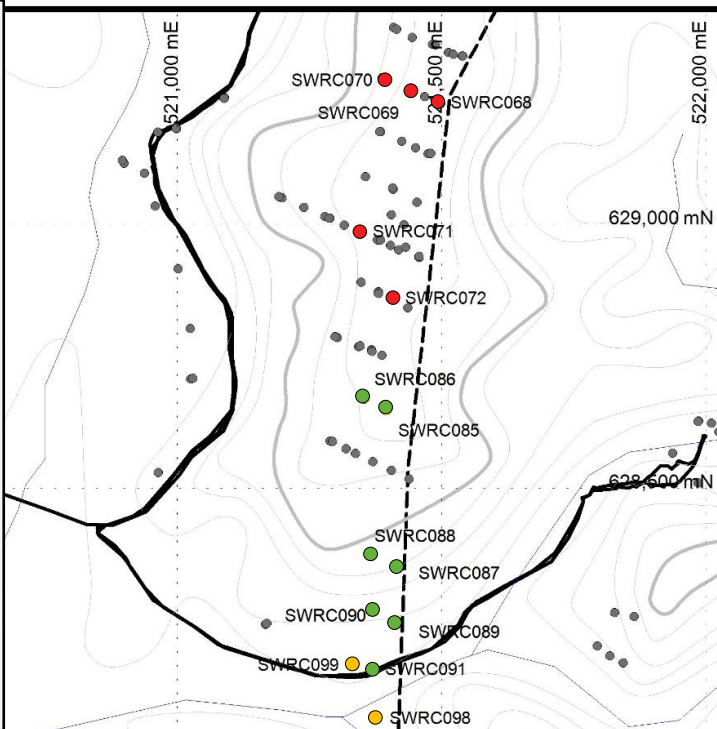
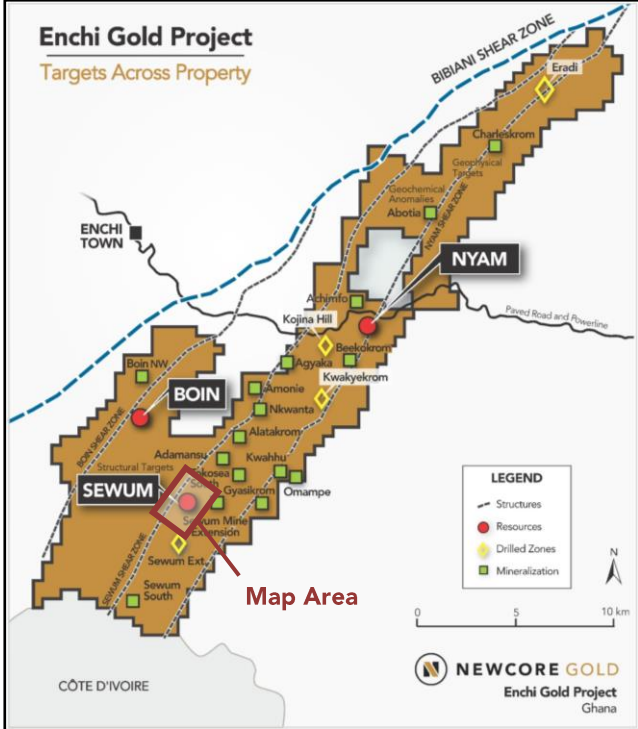
**100 metres**

**NEWCORE GOLD**

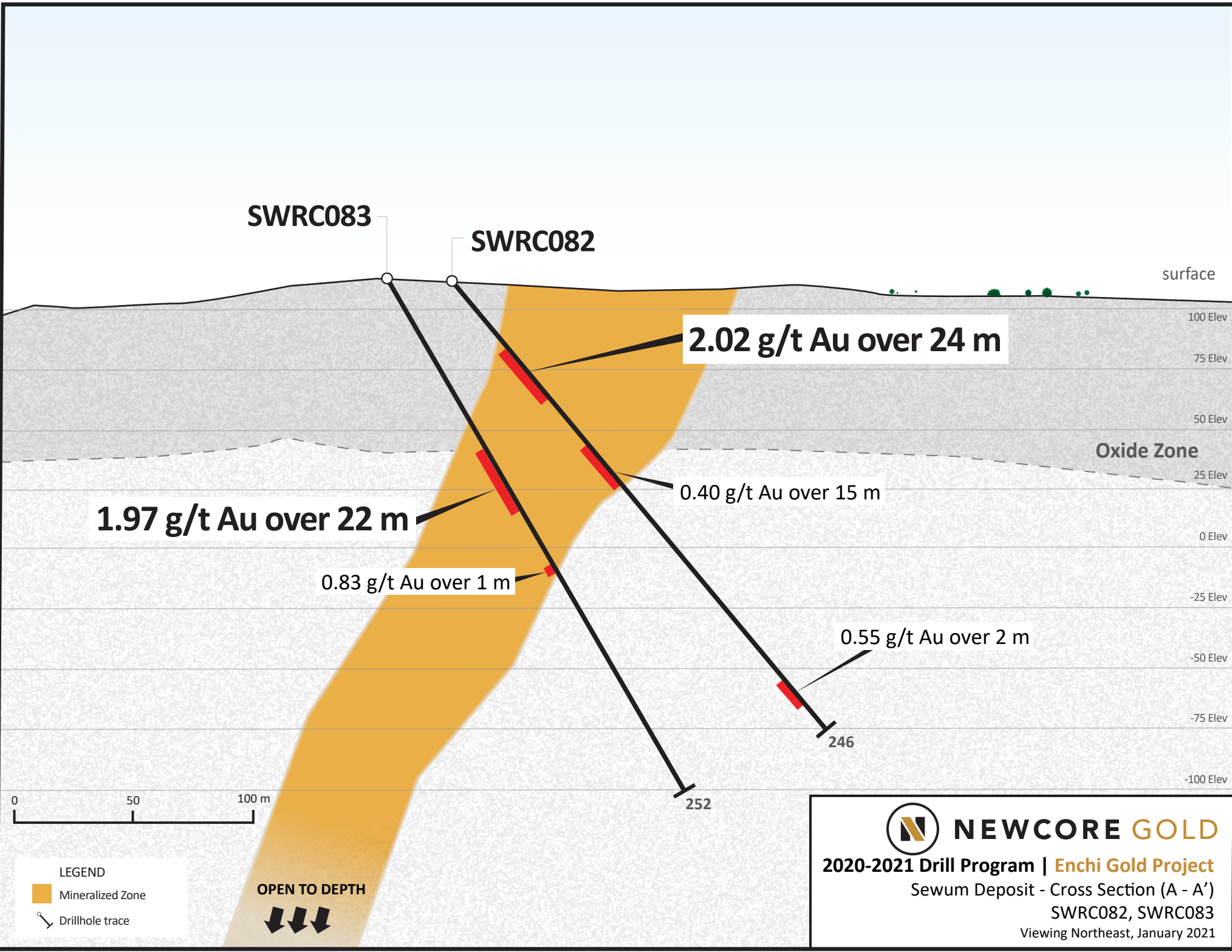
**2020-2021 Drill Program | Enchi Gold Project**  
Kwakyekrom, Ghana (As of Jan 27, 2021)

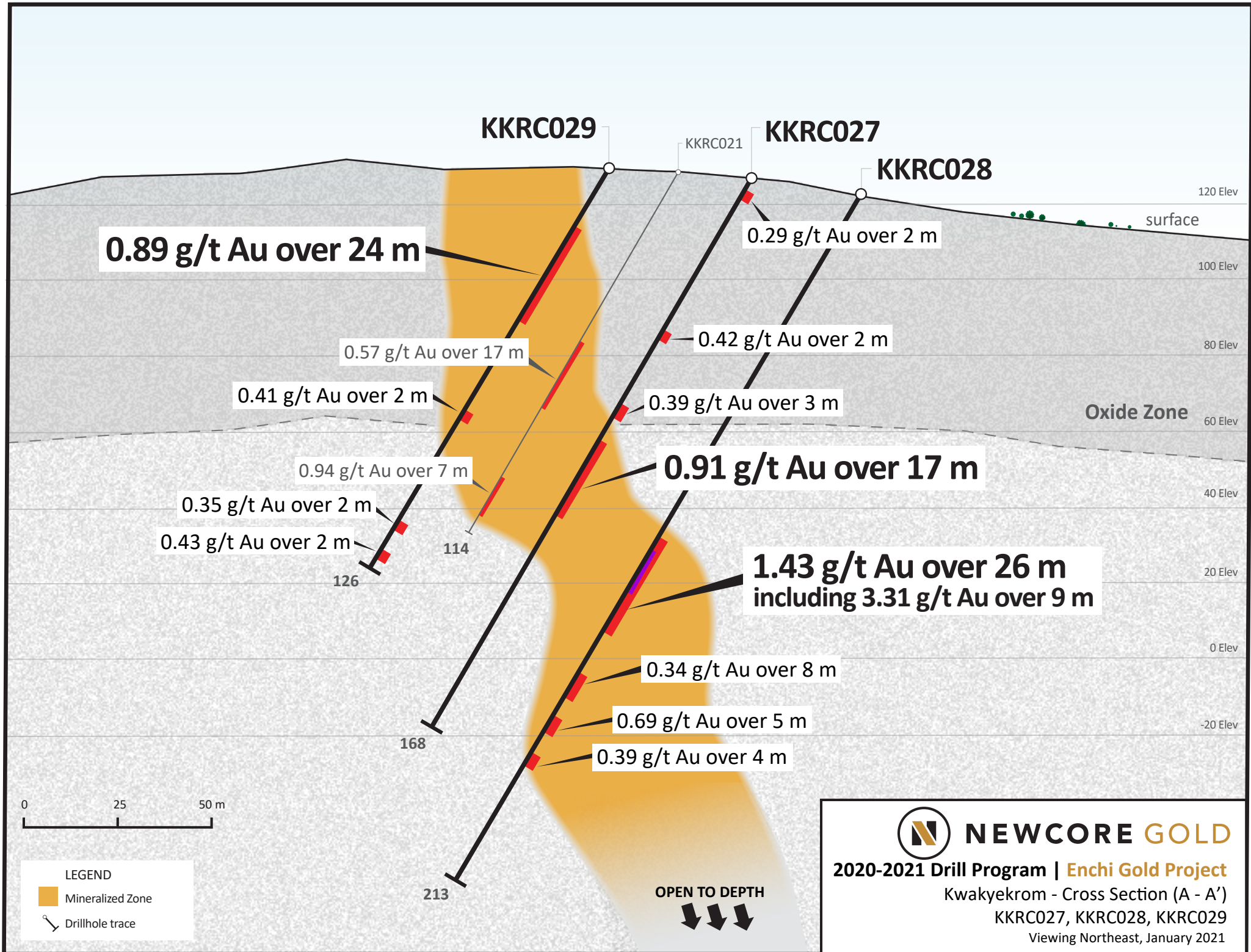
# Enchi Gold Project


Targets Across Property









 **NEWCORE GOLD**

**2020-2021 Drill Program | Enchi Gold Project**

Kwakyekrom - Cross Section (A - A')

KKRC027, KKRC028, KKRC029

Viewing Northeast, January 2021

**Drill Results Released January 27, 2021**

Hole ID	Zone/Deposit	From (m)	To (m)	Length (m)	Au (g/t)	UTM East	UTM North	Elevation	Azimuth °	Dip °	Hole Length (m)
<b>SWRC078</b>	Sewum			no significant results		520197	626036	83	120	-60	270
<b>SWRC079</b>	Sewum	207.0	209.0	2.0	0.37	520334	626242	104	120	-60	294
and		260.0	262.0	2.0	1.78						
and		278.0	284.0	6.0	0.98						
<b>SWRC080</b>	Sewum	149.0	159.0	<b>10.0</b>	<b>1.35</b>	520405	626279	113	120	-60	204
and		166.0	168.0	2.0	0.49						
<b>SWRC081</b>	Sewum			no significant results		520380	626293	104	120	-60	250
<b>SWRC082</b>	Sewum	36.0	60.0	<b>24.0</b>	<b>2.02</b>	520483	626291	115	120	-50	246
and		96.0	111.0	15.0	0.40						
and		222.0	224.0	2.0	0.55						
<b>SWRC083</b>	Sewum	86.0	108.0	<b>22.0</b>	<b>1.97</b>	520459	626301	124	120	-60	252
and		140.0	141.0	1.0	0.83						
<b>SWRC084</b>	Sewum	115.0	134.0	<b>19.0</b>	<b>1.41</b>	520472	626357	114	120	-60	250
<b>SWRC085</b>	Sewum	4.0	12.0	8.0	0.43	521395	628651	191	120	-50	100
and		42.0	44.0	2.0	0.36						
and		63.0	64.0	1.0	0.31						
<b>SWRC086</b>	Sewum	131.0	133.0	2.0	0.46	521353	628672	198	120	-50	150
<b>SWRC087</b>	Sewum	0.0	1.0	1.0	0.66	521415	628352	145	120	-50	120
and		84.0	86.0	2.0	0.48						
<b>SWRC088</b>	Sewum	7.0	18.0	11.0	0.32	521366	628375	145	120	-50	180
and		34.0	36.0	2.0	0.29						
and		56.0	63.0	7.0	0.35						

Hole ID	Zone/Deposit	From (m)	To (m)	Length (m)	Au (g/t)	UTM East	UTM North	Elevation	Azimuth °	Dip °	Hole Length (m)
<b>SWRC089</b>	Sewum	12.0	13.0	1.0	0.33	521412	628244	127	120	-50	102
and		43.0	45.0	2.0	0.31						
and		47.0	49.0	2.0	0.30						
and		60.0	62.0	2.0	0.38						
<b>SWRC090</b>	Sewum	0.0	1.0	1.0	0.52	521370	628269	137	120	-50	156
and		66.0	68.0	2.0	0.29						
and		114.0	116.0	2.0	0.46						
and		119.0	121.0	2.0	0.73						
<b>SWRC091</b>	Sewum	4.0	5.0	1.0	0.32	521371	628158	107	120	-50	100
and		60.0	61.0	1.0	0.30						
and		81.0	82.0	1.0	0.40						
and		95.0	99.0	4.0	0.81						
<b>SWRC092</b>	Sewum	90.0	91.0	1.0	0.71	521270	627986	106	120	-50	220
and		140.0	148.0	8.0	0.37						
and		196.0	198.0	2.0	0.43						
<b>KKRC026</b>	Kwakyekrom	20.0	24.0	<b>4.0</b>	<b>1.32</b>	528614	634705	128	298	-60	162
and		70.0	73.0	3.0	0.44						
and		80.0	94.0	<b>14.0</b>	<b>1.69</b>						
and		120.0	121.0	1.0	0.44						
and		126.0	128.0	2.0	0.63						
and		138.0	141.0	3.0	0.31						
<b>KKRC027</b>	Kwakyekrom	1.0	3.0	2.0	0.29	528611	634689	128	298	-60	168
and		49.0	51.0	2.0	0.42						
and		78.0	81.0	3.0	0.39						
and		84.0	101.0	<b>17.0</b>	<b>0.91</b>						

Hole ID	Zone/Deposit	From (m)	To (m)	Length (m)	Au (g/t)	UTM East	UTM North	Elevation	Azimuth °	Dip °	Hole Length (m)
<b>KKRC028</b>	Kwakyekrom	111.0	137.0	<b>26.0</b>	<b>1.43</b>	528632	634668	126	298	-60	213
including		115.0	124.0	<b>9.0</b>	<b>3.31</b>						
and		149.0	157.0	8.0	0.34						
and		162.0	167.0	5.0	0.69						
and		176.0	180.0	4.0	0.39						
<b>KKRC029</b>	Kwakyekrom	21.0	45.0	<b>24.0</b>	<b>0.89</b>	528574	634699	133	298	-60	126
and		54.0	56.0	2.0	0.41						
and		116.0	118.0	2.0	0.35						
and		123.0	125.0	2.0	0.43						
<b>KKRC030</b>	Kwakyekrom	65.0	66.0	1.0	0.42	528653	634733	127	298	-60	180
and		68.0	69.0	1.0	0.46						
and		109.0	127.0	<b>18.0</b>	<b>0.97</b>						
and		145.0	147.0	2.0	0.43						
<b>KKRC031</b>	Kwakyekrom	30.0	32.0	2.0	0.78	528682	634774	131	298	-60	186
and		114.0	124.0	<b>10.0</b>	<b>2.97</b>						
and		162.0	168.0	<b>6.0</b>	<b>0.88</b>						
and		181.0	184.0	3.0	0.36						
<b>KKRC032</b>	Kwakyekrom	14.0	24.0	10.0	0.32	528570	634723	134	298	-60	114
and		56.0	63.0	7.0	0.40						
<b>KKRC033</b>	Kwakyekrom	26.0	28.0	2.0	0.33	528569	634584	109	298	-60	126
and		47.0	49.0	2.0	0.41						
and		69.0	75.0	<b>6.0</b>	<b>1.19</b>						
<b>KKRC034</b>	Kwakyekrom	14.0	46.0	<b>32.0</b>	<b>0.68</b>	528517	634607	124	298	-60	102
and		67.0	74.0	7.0	0.58						
and		90.0	95.0	5.0	0.34						

**Previously Released Drill Results**

Hole ID	Zone/Deposit	From (m)	To (m)	Length (m)	Au (g/t)	UTM East	UTM North	Elevation	Azimuth °	Dip °	Hole Length (m)
<b>KBRC138</b>	Boin	92.0	96.0	4.0	1.05	518408	632972	147	114	-60	97
<b>KBRC138A</b>	Boin	133.0	135.0	2.0	0.57	518405	632976	147	114	-60	216
and		146.0	148.0	2.0	0.65						
<b>KBRC139</b>	Boin	1.0	17.0	<b>16.0</b>	<b>0.69</b>	518700	633234	130	120	-60	80
<b>KBRC140</b>	Boin	4.0	7.0	3.0	0.31	519121	633708	155	120	-60	80
and		13.0	14.0	1.0	0.44						
<b>KBRC141</b>	Boin	10.0	21.0	11.0	0.34	519018	633704	156	114	-50	120
and		48.0	95.0	<b>47.0</b>	<b>1.67</b>						
including		49.0	58.0	<b>9.0</b>	<b>2.96</b>						
and incl.		75.0	85.0	<b>10.0</b>	<b>3.63</b>						
<b>KBRC142</b>	Boin	1.0	4.0	3.0	0.27	518558	633239	129	114	-50	156
and		131.0	150.0	<b>19.0</b>	<b>0.43</b>						
including		131.0	142.0	11.0	0.60						
<b>KBRC142B</b>	Boin	121.0	130.0	9.0	0.30	518573	633233	137	114	-50	238
<b>KBRC143</b>	Boin	3.0	17.0	14.0	0.56	519395	634172	120	114	-60	108
<b>KBRC144</b>	Boin	146.0	148.0	2.0	0.51	519378	634178	120	120	-60	150
<b>KBRC145</b>	Boin	48.0	55.0	7.0	0.54	520325	635410	117	120	-60	150
<b>KBRC146</b>	Boin	7.0	10.0	3.0	0.24	520456	635619	124	114	-50	100
and		30.0	62.0	<b>32.0</b>	<b>0.92</b>						
including		42.0	54.0	<b>12.0</b>	<b>1.78</b>						
and incl.		59.0	61.0	2.0	0.52						
<b>KBRC147</b>	Boin	50.0	59.0	9.0	0.52	520424	635582	124	114	-50	102
<b>KBRC148</b>	Boin	56.0	58.0	2.0	0.69	520391	635546	122	114	-50	108
and		75.0	77.0	2.0	0.30						
<b>KBRC149</b>	Boin	38.0	41.0	3.0	0.36	520378	635496	120	114	-50	100

**Newcore Gold Ltd. | Enchi Gold Project**

2020 - 2021 Drill Results



Hole ID	Zone/Deposit	From (m)	To (m)	Length (m)	Au (g/t)	UTM East	UTM North	Elevation	Azimuth °	Dip °	Hole Length (m)
<b>KBRC150</b>	Boin	59.0	94.0	35.0	0.57	520335	635517	125	114	-65	148
including		65.0	91.0	26.0	0.70						
and		130.0	135.0	5.0	0.59						
and		141.0	148.0	7.0	0.42						
<b>KBRC150A</b>	Boin	72.0	74.0	2.0	0.59	520338	635514	122	114	-65	174
and		87.0	108.0	<b>21.0</b>	<b>1.19</b>						
and		136.0	139.0	3.0	1.01						
and		145.0	162.0	17.0	0.44						
<b>KBRC151</b>	Boin	9.0	20.0	<b>11.0</b>	<b>2.30</b>	519349	634402	131	120	-60	156
and		62.0	65.0	3.0	0.63						
and		136.0	144.0	8.0	0.55						
<b>KBRC152</b>	Boin	73.0	74.0	1.0	1.20	519292	634429	117	120	-60	258
and		209.0	213.0	4.0	1.56						
and		234.0	235.0	1.0	2.55						
<b>KBRC153</b>	Boin	7.0	11.0	4.0	0.68	519317	634201	122	120	-60	258
and		28.0	33.0	5.0	0.42						
and		42.0	60.0	<b>18.0</b>	<b>1.21</b>						
and		67.0	71.0	<b>4.0</b>	<b>1.40</b>						
and		110.0	114.0	4.0	0.82						
and		155.0	158.0	3.0	0.33						
and		191.0	194.0	3.0	0.39						
<b>KBRC154</b>	Boin	88.0	95.0	7.0	0.61	519086	633928	157	120	-60	178
and		149.0	152.0	3.0	0.27						
<b>KBRC155</b>	Boin	85.0	89.0	4.0	0.22	518896	633582	155	120	-60	138
and		103.0	105.0	2.0	0.89						
and		118.0	134.0	<b>16.0</b>	<b>0.57</b>						

**Newcore Gold Ltd. | Enchi Gold Project**

2020 - 2021 Drill Results



Hole ID	Zone/Deposit	From (m)	To (m)	Length (m)	Au (g/t)	UTM East	UTM North	Elevation	Azimuth °	Dip °	Hole Length (m)
<b>KBRC155A</b>	Boin	95.0	97.0	2.0	0.68	518900	633578	163	120	-60	204
and		110.0	113.0	3.0	0.64						
and		127.0	135.0	8.0	0.37						
<b>KBRC156A</b>	Boin	156.0	174.0	<b>18.0</b>	<b>0.69</b>	518480	633164	130	114	-55	270
and		187.0	191.0	<b>4.0</b>	<b>1.20</b>						
<b>KBRC157B</b>	Boin	150.0	162.0	12.0	0.70	518457	633065	128	114	-65	180
<b>KBRC158</b>	Boin	77.0	91.0	<b>14.0</b>	<b>1.41</b>	518379	632992	126	114	-60	260
<b>KBRC159</b>	Boin	178.0	240.0	<b>62.0</b>	<b>0.73</b>	518423	633075	127	114	-65	240
including		187.0	206.0	<b>19.0</b>	<b>1.76</b>						
and incl.		199.0	206.0	<b>7.0</b>	<b>3.18</b>						
<b>KBRC160</b>	Boin		no significant results			518358	632778	124	114	-60	120
<b>KBRC161</b>	Boin	124.0	126.0	2.0	0.37	518330	632898	128	114	-55	200
and		144.0	151.0	7.0	0.36						
and		163.0	166.0	3.0	0.31						
<b>KBRC162</b>	Boin	65.0	69.0	4.0	0.53	518321	632793	120	114	-60	156
and		88.0	91.0	3.0	0.68						
and		101.0	107.0	<b>6.0</b>	<b>1.67</b>						
<b>KBRC163</b>	Boin	11.0	14.0	3.0	0.34	519678	634811	141	114	-60	102
and		27.0	54.0	<b>27.0</b>	<b>1.27</b>						
<b>KBRC164</b>	Boin	19.0	25.0	<b>6.0</b>	<b>1.23</b>	519649	634822	164	114	-60	144
and		102.0	114.0	<b>12.0</b>	<b>0.69</b>						
and		128.0	132.0	4.0	0.47						
<b>KBRC165</b>	Boin	78.0	80.0	2.0	0.41	519895	635045	120	114	-60	102
<b>KBRC166</b>	Boin		no significant results			519886	635049	126	114	-60	140
<b>KBRC167</b>	Boin		no significant results			519836	634974	123	114	-60	120



Hole ID	Zone/Deposit	From (m)	To (m)	Length (m)	Au (g/t)	UTM East	UTM North	Elevation	Azimuth °	Dip °	Hole Length (m)
<b>KBRC168</b>	Boin	1.0	6.0	5.0	0.56	519816	634986	121	114	-60	140
<b>KBRC169</b>	Boin	55.0	69.0	<b>14.0</b>	<b>1.41</b>	519973	635110	128	114	-60	138
including		62.0	68.0	<b>6.0</b>	<b>2.86</b>						
and		84.0	86.0	2.0	0.53						
and		90.0	92.0	2.0	0.53						
and		125.0	131.0	6.0	0.31						
<b>KBRC170</b>	Boin	45.0	49.0	4.0	0.31	520050	635185	141	114	-60	156
and		70.0	72.0	2.0	0.49						
<b>KBRC171</b>	Boin	77.0	78.0	1.0	1.07	520030	635195	129	114	-60	150
and		119.0	129.0	10.0	0.44						
<b>KBRC172</b>	Boin	78.0	84.0	6.0	0.57	520131	635252	125	114	-60	150
and		128.0	138.0	<b>10.0</b>	<b>0.92</b>						
<b>KBRC173</b>	Boin	85.0	87.0	2.0	0.76	520105	635265	126	114	-60	186
and		154.0	158.0	4.0	0.32						
and		166.0	179.0	13.0	0.30						
<b>KBRC174</b>	Boin	91.0	93.0	2.0	0.41	519957	635121	130	114	-60	162
and		153.0	154.0	1.0	0.76						
<b>KBRC175</b>	Boin	67.0	89.0	<b>22.0</b>	<b>0.65</b>	520291	635396	119	114	-60	150
<b>KBRC176</b>	Boin	70.0	77.0	7.0	0.39	520369	635575	130	114	-60	182
and		95.0	105.0	<b>10.0</b>	<b>0.64</b>						
and		130.0	140.0	10.0	0.44						

**Newcore Gold Ltd. | Enchi Gold Project**

2020 - 2021 Drill Results



Hole ID	Zone/Deposit	From (m)	To (m)	Length (m)	Au (g/t)	UTM East	UTM North	Elevation	Azimuth °	Dip °	Hole Length (m)
<b>KBRC177</b>	Boin	81.0	84.0	2.0	0.47	520320	635523	123	114	-65	228
and		108.0	109.0	1.0	0.46						
and		116.0	120.0	4.0	0.81						
and		204.0	206.0	2.0	1.39						
<b>KBRC178</b>	Boin	134.0	140.0	6.0	0.57	520297	635532	117	114	-65	220
		147.0	149.0	2.0	0.90						
<b>KBRC179</b>	Boin	92.0	97.0	5.0	0.56	520436	635631	133	114	-50	150
<b>KBRC180</b>	Boin	108.0	110.0	2.0	0.33	520415	635637	134	114	-55	170
and		126.0	129.0	3.0	0.47						
<b>KBRC181</b>	Boin	127.0	138.0	<b>11.0</b>	<b>0.45</b>	520393	635648	138	114	-60	216
and		142.0	145.0	3.0	0.29						
and		155.0	162.0	<b>7.0</b>	<b>1.05</b>						
<b>KBRC182</b>	Boin	64.0	68.0	4.0	0.35	520570	635717	137	114	-60	108
and		78.0	82.0	4.0	0.68						
and		87.0	91.0	4.0	0.70						
<b>KBRC183</b>	Boin	93.0	96.0	3.0	0.49	520544	635724	131	114	-60	144
and		105.0	121.0	16.0	0.30						
<b>KBRC184</b>	Boin	86.0	88.0	2.0	0.44	520234	635422	114	114	-60	216
and		102.0	111.0	<b>9.0</b>	<b>0.82</b>						
and		125.0	128.0	3.0	0.45						
and		145.0	166.0	<b>21.0</b>	<b>0.94</b>						

Hole ID	Zone/Deposit	From (m)	To (m)	Length (m)	Au (g/t)	UTM East	UTM North	Elevation	Azimuth °	Dip °	Hole Length (m)
<b>SWRC068</b>	Sewum	3.0	5.0	2.0	0.28	521494	629230	193	120	-70	100
and		23.0	31.0	8.0	0.30						
and		39.0	42.0	3.0	0.35						
and		46.0	62.0	<b>16.0</b>	<b>0.54</b>						
including		51.0	57.0	6.0	0.93						
and		74.0	76.0	2.0	1.03						
<b>SWRC069</b>	Sewum	39.0	41.0	2.0	0.30	521442	629252	198	120	-70	125
and		50.0	59.0	9.0	0.55						
and		63.0	70.0	7.0	0.47						
and		98.0	114.0	<b>16.0</b>	<b>1.20</b>						
<b>SWRC070</b>	Sewum	43.0	45.0	2.0	1.41	521392	629273	193	120	-70	180
and		141.0	148.0	7.0	0.98						
<b>SWRC071</b>	Sewum	3.0	16.0	13.0	0.45	521347	628986	193	120	-55	100
and		38.0	43.0	5.0	0.46						
and		95.0	100.0	5.0	0.55						
<b>SWRC072</b>	Sewum	3.0	22.0	<b>19.0</b>	<b>0.67</b>	521408	628860	199	120	-60	150
and		46.0	84.0	<b>38.0</b>	<b>0.42</b>						
<b>SWRC073</b>	Sewum	0.0	28.0	<b>28.0</b>	<b>1.52</b>	520472	626241	119	130	-50	100
including		15.0	25.0	<b>10.0</b>	<b>3.58</b>						
and		36.0	42.0	6.0	1.21						
<b>SWRC074</b>	Sewum	7.0	38.0	<b>31.0</b>	<b>0.84</b>	520416	626193	105	130	-50	100
including		8.0	17.0	<b>9.0</b>	<b>1.47</b>						
and		48.0	60.0	12.0	0.71						
and		92.0	94.0	2.0	0.36						

**Newcore Gold Ltd. | Enchi Gold Project**

2020 - 2021 Drill Results



Hole ID	Zone/Deposit	From (m)	To (m)	Length (m)	Au (g/t)	UTM East	UTM North	Elevation	Azimuth °	Dip °	Hole Length (m)
<b>SWRC075</b>	Sewum	169.0	177.0	8.0	0.56	520355	626219	102	130	-60	220
<b>SWRC076</b>	Sewum	1.0	12.0	11.0	0.48	521308	627853	118	120	-50	120
and		39.0	88.0	<b>49.0</b>	<b>0.91</b>						
and		104.0	120.0	<b>16.0</b>	<b>3.04</b>						
<b>SWRC077</b>	Sewum	29.0	35.0	6.0	0.49	521268	627871	112	120	-50	180
and		54.0	56.0	2.0	0.36						
and		68.0	83.0	<b>15.0</b>	<b>0.76</b>						
and		89.0	92.0	3.0	0.62						
and		117.0	119.0	2.0	0.40						
and		126.0	131.0	5.0	0.40						
and		138.0	140.0	2.0	0.28						
and		151.0	153.0	2.0	0.35						
and		163.0	165.0	2.0	0.40						
<b>NBRC016</b>	Nyam	23.0	29.0	6.0	1.03						
and		50.0	54.0	4.0	0.40						
and		68.0	86.0	18.0	0.63						
and		97.0	100.0	3.0	0.48						
and		109.0	112.0	3.0	0.55						
<b>NBRC017</b>	Nyam	8.0	53.0	<b>45.0</b>	<b>1.38</b>	530241	637278	69	300	-60	150
including		8.0	30.0	<b>22.0</b>	<b>0.74</b>						
and incl.		47.0	53.0	<b>6.0</b>	<b>6.25</b>						
and		64.0	66.0	2.0	1.88						
and		83.0	93.0	10.0	0.41						
and		102.0	107.0	5.0	0.54						
and		135.0	137.0	2.0	0.34						

**Newcore Gold Ltd. | Enchi Gold Project**

2020 - 2021 Drill Results



Hole ID	Zone/Deposit	From (m)	To (m)	Length (m)	Au (g/t)	UTM East	UTM North	Elevation	Azimuth °	Dip °	Hole Length (m)
<b>NBRC018</b>	Nyam	10.0	12.0	2.0	0.25	530180	637314	76	300	-60	84
and		36.0	42.0	6.0	0.32						
<b>NBRC019</b>	Nyam	80.0	82.0	2.0	0.35	530845	638277	81	300	-60	156
and		91.0	108.0	<b>17.0</b>	<b>1.20</b>						
<b>NBRC020</b>	Nyam	51.0	60.0	<b>9.0</b>	<b>1.14</b>	530506	637714	86	300	-60	150
and		73.0	102.0	<b>29.0</b>	<b>0.94</b>						
and		110.0	120.0	<b>10.0</b>	<b>1.18</b>						
and		139.0	143.0	4.0	0.41						
<b>NBRC021</b>	Nyam	15.0	17.0	2.0	0.33	530474	637679	93	300	-60	130
and		32.0	34.0	2.0	0.73						
and		50.0	54.0	4.0	1.56						
and		63.0	84.0	<b>21.0</b>	<b>1.42</b>						
and		90.0	96.0	<b>6.0</b>	<b>1.26</b>						
and		102.0	105.0	3.0	0.36						
and		109.0	119.0	10.0	0.52						
and		126.0	129.0	3.0	0.65						
<b>NBRC022</b>	Nyam	8.0	10.0	2.0	1.96	530435	637610	102	300	-60	150
and		70.0	90.0	<b>20.0</b>	<b>1.72</b>						
and		116.0	119.0	3.0	0.36						
<b>NBRC023</b>	Nyam	49.0	51.0	2.0	0.19	530712	638187	98	300	-60	80
<b>NKRC001</b>	Nkwanta		no significant results			525094	633089	101	300	-55	100
<b>KKRC017A</b>	Kwakyekrom	45.0	48.0	3.0	0.52	528698	634833	127	298	-60	150
and		69.0	70.0	1.0	1.17						
and		89.0	120.0	<b>31.0</b>	<b>0.46</b>						
including		107.0	120.0	<b>13.0</b>	<b>0.72</b>						

**Newcore Gold Ltd. | Enchi Gold Project**

2020 - 2021 Drill Results



Hole ID	Zone/Deposit	From (m)	To (m)	Length (m)	Au (g/t)	UTM East	UTM North	Elevation	Azimuth °	Dip °	Hole Length (m)
<b>KKRC018</b>	Kwakyekrom	35.0	39.0	4.0	0.29	528658	634784	129	298	-60	120
and		86.0	92.0	6.0	0.80						
and		99.0	110.0	<b>11.0</b>	<b>2.35</b>						
<b>KKRC019</b>	Kwakyekrom	4.0	7.0	3.0	0.36	528611	634738	128	298	-60	120
and		58.0	78.0	20.0	0.36						
including		59.0	63.0	4.0	0.50						
and incl.		70.0	76.0	6.0	0.64						
and		88.0	92.0	4.0	0.38						
and		102.0	104.0	2.0	0.50						
<b>KKRC020</b>	Kwakyekrom	26.0	28.0	2.0	0.79	528598	634714	133	298	-60	110
and		44.0	47.0	3.0	0.43						
and		60.0	75.0	15.0	0.48						
and		79.0	83.0	4.0	1.04						
<b>KKRC021</b>	Kwakyekrom	52.0	69.0	<b>17.0</b>	<b>0.57</b>	528592	634693	132	298	-60	114
and		97.0	104.0	7.0	0.94						
<b>KKRC022</b>	Kwakyekrom	41.0	67.0	<b>26.0</b>	<b>0.51</b>	528555	634617	124	298	-60	114
including		59.0	66.0	5.0	1.59						
and		101.0	104.0	3.0	0.57						
<b>KKRC023</b>	Kwakyekrom	34.0	40.0	<b>6.0</b>	<b>4.71</b>	528542	634595	117	298	-60	122
and		60.0	66.0	6.0	0.34						
<b>KKRC024</b>	Kwakyekrom	35.0	38.0	3.0	0.77	528550	634557	104	298	-60	130
and		59.0	74.0	15.0	0.44						
and		104.0	113.0	9.0	0.23						

Hole ID	Zone/Deposit	From (m)	To (m)	Length (m)	Au (g/t)	UTM East	UTM North	Elevation	Azimuth °	Dip °	Hole Length (m)
<b>KKRC025</b>	Kwakyekrom	0.0	18.0	<b>18.0</b>	<b>0.45</b>	528502	634580	103	298	-60	100
including		13.0	17.0	4.0	1.00						
and		23.0	29.0	6.0	0.57						
and		69.0	77.0	8.0	0.21						
and		89.0	100.0	11.0	0.63						
<b>KJRC011</b>	Kojina Hill			no significant results		528887	637281	110	300	-65	170
<b>KJRC012</b>	Kojina Hill	218.0	222.0	<b>4.0</b>	<b>1.34</b>	528887	637281	110	300	-75	252
and		229.0	230.0	1.0	0.83						
<b>KJRC013</b>	Kojina Hill	6.0	13.0	7.0	0.33	528897	637243	123	300	-60	170
and		83.0	113.0	<b>30.0</b>	<b>0.39</b>						
including		83.0	91.0	<b>8.0</b>	<b>0.51</b>						
and incl.		94.0	99.0	5.0	0.56						
and incl.		109.0	113.0	4.0	0.57						
<b>KJRC014</b>	Kojina Hill	57.0	60.0	3.0	0.37	528897	637243	123	300	-75	288
and		209.0	212.0	3.0	0.37						
<b>KJRC015</b>	Kojina Hill	126.0	127.0	1.0	0.40	528867	637240	130	300	-60	192
and		139.0	140.0	1.0	0.42						
<b>KJRC016</b>	Kojina Hill	174.0	175.0	1.0	0.31	528871	637239	127	300	-75	252
and		208.0	209.0	1.0	0.30						
and		244.0	246.0	2.0	0.33						
<b>KJRC017</b>	Kojina Hill	108.0	112.0	4.0	0.86	528838	637203	149	300	-65	162
and		119.0	122.0	3.0	0.28						
and		125.0	145.0	<b>20.0</b>	<b>1.09</b>						
including		125.0	129.0	<b>4.0</b>	<b>2.52</b>						
and		155.0	156.0	1.0	0.47						

Hole ID	Zone/Deposit	From (m)	To (m)	Length (m)	Au (g/t)	UTM East	UTM North	Elevation	Azimuth °	Dip °	Hole Length (m)
<b>KJRC018</b>	Kojina Hill	48.0	50.0	2.0	0.30	528860	637219	141	300	-65	150
and		98.0	102.0	4.0	0.68						
<b>KJRC019</b>	Kojina Hill	81.0	89.0	8.0	0.50	528871	637239	129	270	-70	282
and		121.0	122.0	1.0	0.60						

1. Intervals reported are core lengths with true width estimated to be 75 - 85%.

2. Length-weighted averages from uncut assays.

3. All drilling completed by independent contractor.

4. All drilling samples sealed on site and delivered directly to independent lab Intertek Mineral Limited located in Tarkwa, Ghana for preparation and 50g Fire Assay with AAS finish.

5. QA/QC procedures include industry standard inclusion of standards, blanks, and duplicates in all sample batches.